

 Hong Kong

Friday **21**
March
8:00am - 5:00pm

Comprehensive Introduction to Dental Sleep Medicine

SUPPORTED BY:



THE UNIVERSITY OF HONG KONG
**Dental Alumni
Association**

CME/CPD pending application for afternoon session: 2-5pm

PRESENTED BY



**OROFACIAL SLEEP
CONSORTIUM**
GLOBAL



HONG KONG
DENTAL SLEEP
MEDICINE SOLUTIONS

This interactive program combines engaging lectures and hands-on workshop tailored for dentists seeking to explore or expand their expertise in dental sleep medicine.

VENUE:
**Sheraton Hong Kong
Hotel & Towers**
Tsim Sha Tsui

SPEAKERS INFORMATION

Dr. Leopoldo P. Correa is an internationally renowned expert in *Dental Sleep Medicine*, specializing in the dental and multidisciplinary management of sleep-related breathing disorders, including obstructive sleep apnea. Over the course of 25 years at Tufts University School of Dental Medicine in Boston USA, he directed and developed pioneering international continuing education programs. His efforts have advanced the integration of sleep therapies within dentistry and fostered collaboration with various specialties, to establish comprehensive diagnostic and treatment approaches.

Dr. Correa has mentoring dentists, and led innovative educational initiatives across the United States, Europe, Asia, and Latin America, contributing significantly to global training in Dental Sleep Medicine. He is certified by the **American Board of Dental Sleep Medicine (ABDSM)** and is a **Fellow of the International College of Dentists (ICD)**, accolades that highlight his professional excellence and international recognition.



**Leopoldo Correa,
BDS, MS**

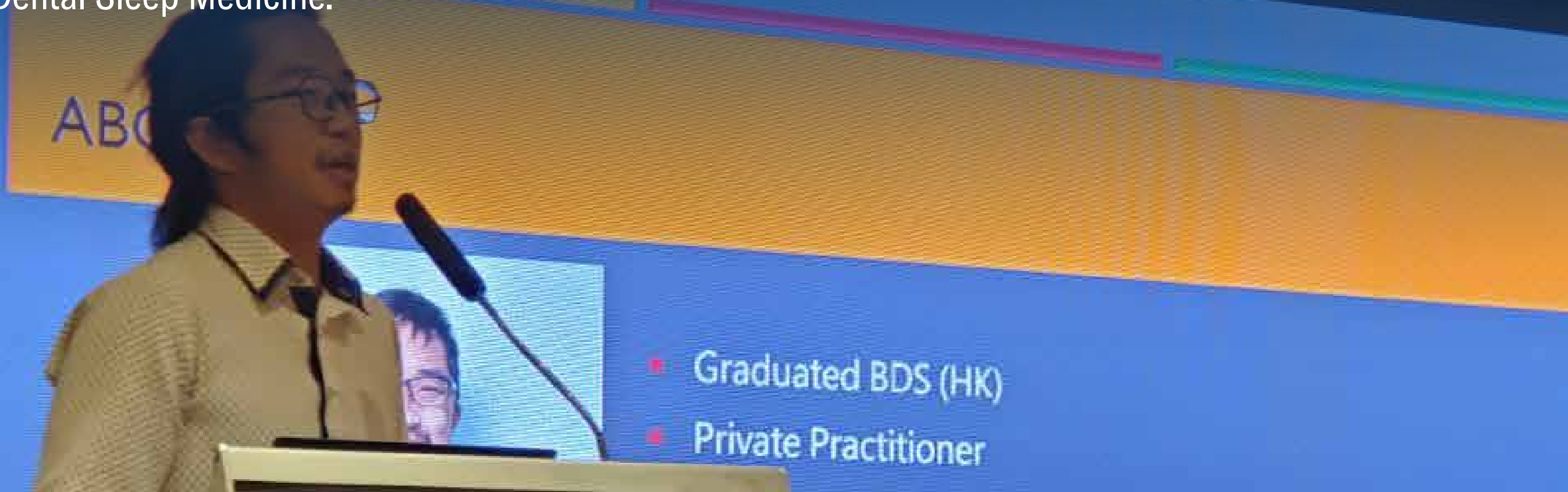
Dr. Jonathan Ku earned his dental degree from the University of Hong Kong and began his career as a general dental practitioner. Alongside his work in general dentistry, Dr. Ku developed a strong interest in the diagnosis and management of temporomandibular joint disorders (TMD) and orofacial pain. This passion led him to explore the intersection of TMD and dental sleep medicine, enabling him to provide more comprehensive care by addressing the intricate connections between these fields.

In his approach to managing sleep-related breathing disorders, Dr. Ku emphasizes a multidisciplinary strategy that includes oral appliance therapy, oromyofunctional therapy, and breathing re-education to optimize patient outcomes.

Dr. Ku further advanced his expertise by attending the Dental Sleep Medicine Mini-Residency program at Tufts University, Boston, under the guidance of Dr. Leopoldo Correa, the program's course director. He is now an International Certificant of the American Board of Dental Sleep Medicine and holds the designation of Certified Dentist in Dental Sleep Medicine through the American Academy of Dental Sleep Medicine.



**Jonathan Ku,
BDS, MS**



TARGET AUDIENCE

General dentists and specialists interested in incorporating dental sleep medicine into their practice.

LEARNING OBJECTIVES



Understand sleep physiology and sleep disorders.



Comprehend the relationship between TMD and sleep.



Learn the clinical history taking and patient examination.



Practical knowledge to screen, evaluate, refer, and manage OSA patients.



Unbiased overview of oral appliances, including selection criteria.



Become familiar with various custom-fabricated oral appliances



Hands-on experience with bite registration techniques for OSA treatment.

TOPICS

Introduction to Sleep

- Sleep stages and characteristics.
- Anatomy of the upper airway.
- Classification and pathophysiology of Obstructive Sleep Apnea.
- Risk factors, health consequences, and treatment options.

Clinical Examination

- Oropharyngeal evaluation.
- Examination of masticatory muscles and TMJ.

Dental Sleep Medicine

- Clinical guidelines and oral appliance therapy.
- Overview of oral devices for OSA
- Orofacial myofunctional therapy.
- Breathing exercises therapy

Sleep Studies

- Types of sleep studies and their indications.
- Overview of polysomnography (PSG) and understanding sleep study reports.

Bite Registration for Sleep Devices

- Techniques for bite registration.
- Estimating therapeutic jaw position, protrusion, and vertical dimension.

Case-Based Learning

- Management of severe cases.
- Combination therapy approaches.
- Interplay of sleep disorders and TMD

Adjunctive Treatment Modality

- Applying OMT in treatment for OSA patients
- Importance of breathing re-education

SUPPORTED BY:



THE UNIVERSITY OF HONG KONG
**Dental Alumni
Association**

IN COLLABORATION WITH:



**OROFACIAL SLEEP
CONSORTIUM
GLOBAL**



HONG KONG
DENTAL SLEEP
MEDICINE SOLUTIONS

Comprehensive Introduction to Dental Sleep Medicine

Friday
March **21**
8:00am - 5:00pm

COURSE FEE

\$4,650 HKD

EARLY BIRD \$3,850 HKD

Deadline February 9th

REGISTRATION



+852 62018761

Issac Chung

VENUE

Sheraton Hong Kong
Hotel & Towers
Tsim Sha Tsui

MORE INFORMATION



info@orofacialsleepglobal.com

SUPPORTED BY:



THE UNIVERSITY OF HONG KONG

**Dental Alumni
Association**

CME/CPD pending application for afternoon session: 2-5pm

IN COLLABORATION WITH:



**OROFACIAL SLEEP
CONSORTIUM
GLOBAL**



HONG KONG
DENTAL SLEEP
MEDICINE SOLUTIONS